

# Fortinet Wireless Accessories Portfolio

## Power and Mounting Options for FortiAP Devices

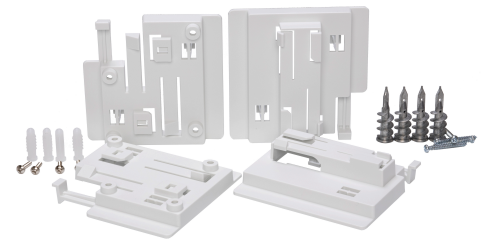
Fortinet offers a wide selection of power and mounting solutions to use with our versatile line of FortiAP and FortiAP-U access points.



PoE Injectors



DC Power Supplies



Mounting Hardware

### Available Models

ACCESSORIES	SKU	DESCRIPTION	SUPPORTED MODELS	
POE injectors	GPI-115	IEEE 802.3af-compliant single-port, mid-span, with 15.4 Watt Gigabit Ethernet (GE) PoE	Fortinet FAP 802.3af-compliant devices	
	GPI-130	IEEE 802.3at-compliant single-port, mid-span, with 30 Watt Gigabit Ethernet (GE) PoE	Fortinet FAP 802.3at-compliant devices	
	GPI-145	IEEE 802.3bt-compliant single-port, mid-span, with 60 Watt 10/100/1000 Mbps, 2.5/5/10 Gbps Ethernet PoE	Fortinet FAP 802.3bt-compliant devices	
DC Power Supplies  XX refers to regional adapters	SP-FAP200-PA-XX	12V, 2.5A, 30 Watt DC power supply	FAP-231G, FAP-233G, FAP-231F, FAP-U231F, FAP-221E, FAP-223E, FAP-231E, FAP-U221EV, FAP-U223EV, FAP-U321EV, FAP-U323EV	
	SP-FAP250-PA-10	12V, 4A, 48 Watt DC power supply (extended temperature range)	FAP-431G, FAP-433G, FAP-231F, FAP-U231F	
	SP-FAP400-PA-XX	12V, 3A, 36 Watt DC power supply	FAP-431G, FAP-433G, FAP-431F, FAP-433F, FAP-831F, FAP-U421EV, FAP-U423EV, FAP-831F	
	SP-FAP43F-PA-XX-5	12V, 2.5A, 30 Watt DC power supply (Pack of 5)	FAP-U431F, FAP-U433F	
	SP-FAP23J-PA-10	48V, 1.04A, 50 Watt DC power supply (Pack of 10)	FAP-23JF	
	SP-FAPU24-PA	54V, 1.2A, 65 Watt DC power supply (Pack of 5)	FAP-U24JEV	
Mounting Hardware	FAP-400-MNT-10	Complete wall and T-rail Mount Kit (Pack of 10)	FAP-231G, FAP-233G, FAP-431G, FAP-433G, FAP-231F, FAP-431F, FAP-433F, FAP-831F, FAP-U431F, FAP-U433F, FAP-U421EV, FAP-U221EV, FAP-U223EV, FAP-U321EV, FAP-U323EV, FAP-U421EV, FAP-U423EV	
	FAP-400-SMNT-20	Mounting brackets for standard/wall or ceiling mount (Pack of 20)	FAP-231G, FAP-233G, FAP-431G, FAP-433G, FAP-231F, FAP-431F, FAP-433F, FAP-831F, FAP-U431F, FAP-U433F, FAP-U421EV, FAP-U423EV, FAP-U221EV, FAP-U223EV, FAP-U321EV, FAP-U323EV	
	FAP-SMNT-MTL-20	Metal extended standoff mounting brackets for standard T-rail wall or ceiling mount (Pack of 20)	FAP-421E, FAP-423E, FAP-S421E, FAP-S423E, FAP-U421EV, FAP-U423EV, FAP-U221EV, FAP-U223EV, FAP-S221E, FAP-S223E, FAP-U321EV, FAP-U323EV, FAP-231E, FAP-431F, FAP-433F, FAP-831F, FAP-U431F, FAP-U433F, FAP-231F	
	FAP-400-RMNT-20	Mounting brackets for recessed T-rail (Pack of 20)	FAP-231G, FAP-233G, FAP-431G, FAP-433G, FAP-231F, FAP-431F, FAP-433F, FAP-831F, FAP-U431F, FAP-U433F, FAP-U421EV, FAP-U423EV, FAP-U221EV, FAP-U223EV, FAP-U321EV, FAP-U323EV	
	FAP-ALL-MTL-5	Metal mounting brackets for standard T-rail, wall, or ceiling mount (Pack of 5)	FAP-231G, FAP-233G, FAP-431G, FAP-433G, FAP-231F, FAP-431F, FAP-433F, FAP-831F, FAP-U431F, FAP-U433F, FAP-U421EV, FAP-U423EV, FAP-U221EV, FAP-U223EV, FAP-U321EV, FAP-U323EV	
	FAP-BRKT-MNT-5	Wall or Mast mounting solution for outdoor Access Points (Pack of 5)	FAP-234G, FAP-234F, FAP-432F, FAP-U234F, FAP-U432F	
	FAP-221E-MNT-50	Complete wall and T-rail Mount Kit (Pack of 50)	FAP-221E, FAP-223E	
	FAP-MNT-WJ-20	Desktop stand for Wall Jack style APs. Converts wall mounting hardware included with unit to desktop mounting (Pack of 20)	FAP-23JF, FAP-U24JEV, FAP-C24JE	
	Enclosures	FAP-ENC-43X	Under-seat enclosure for stadiums and arenas	FAP-431F, FAP-U431F, FAP-231F, FAP-U231F, FAP-231E, FAP-221E, FAP-U221E, FAP-231E, FAP-U321E
		FAP-ENC-12X10	12 x 10 x 6 inch NEMA 4X Polycarbonate Enclosure is intended for indoor or outdoor use	FAP-233G/231G, FAP-433G/431G, FAP-433F/431F, FAP-423E/421E, FAP-U433F/U431F, FAP-U323EV/U321EV, FAP-U223E/U221E, FAP-S423E/S421E, FAP-U423EV/U421EV

## PoE Injectors

### GPI-115 / GPI-130 / GPI-145

The GPI-115, GPI-130, and GPI-145 utilize an intelligent design to automatically supply power to only those devices that can accept power over the Ethernet connection. It ensures that legacy non-802.3af/802.3at/802.3bt units can continue to operate.

## Specifications

	GPI-115	GPI-130	GPI-145
<b>Hardware Specifications</b>			
Number of Ports	2:1 for data in, 1 for data and power out	2:1 for data in, 1 for data and power out	2:1 for data in, 1 for data and power out
Pass-through Data Rates	10/100/1000 Mbps	10/100/1000 Mbps	10/100/1000Mbps, 2.5/5/10Gbps
Maximum Cable Run	100 meters or 330 feet which corresponds to Ethernet limits	100 meters or 330 feet which corresponds to Ethernet limits	100 meters or 330 feet which corresponds to Ethernet limits
LED Indicator	Power On/Off and overload conditions	Power On/Off and overload conditions	Power On/Off and overload conditions
Connectors	Shielded RJ-45, EIA 568A and 568B	Shielded RJ-45, EIA 568A and 568B	Shielded RJ-45, EIA 568A and 568B
MTBF	100 000 hrs. @25°C	100 000 hrs. @25°C	200 000 hrs. @ 25°C
<b>Environment</b>			
Power over Ethernet Output	Pin Assignment and Polarity: 4/5 (+), 7/8 (-) Output Power Voltage: 50V DC Output Power: 15.4 Watts	Pin Assignment and Polarity: 4/5 (+), 7/8 (-) Output Power Voltage: 55V DC Output Power: 36 Watts	Data Pairs 1/2 (-), 3/6 (+) Spare Pairs 7/8 (-), 4/5 (+) Output Power Voltage: 55 Vdc nominal
Input Power Requirements	AC Input Voltage: 90V to 264V AC AC Input Current: 0.5A @ 100V-240V AC AC Frequency: 47-63 Hz	AC Input Voltage: 100V to 240V AC AC Input Current: 0.8A @ 100V-240V AC AC Frequency: 50-60 Hz	AC Input Voltage: 100 to 240 Vac AC Input Current: 1.5A @ 100 Vac AC Frequency: 50 to 60 Hz
Operating Ambient Temperature	32°-104°F (0°-40°C)	32°-104°F (0°-40°C)	32°-104°F (0°-40°C)
Storage Temperature	-4°-158°F (-20°-70°C)	-4°-158°F (-20°-70°C)	-4°-158°F (-20°-70°C)
Operating Humidity	Maximum 90%, non-condensing	Maximum 90%, non-condensing	Maximum 90%, non-condensing
Storage Humidity	Maximum 95%, non-condensing	Maximum 95%, non-condensing	Maximum 95%, non-condensing
Heat Dissipation	13 BTU/h (@ 240V AC)	20 BTU/h (@ 240V AC)	36 BTU/Hr (@ 240V AC)
<b>Dimensions</b>			
Height x Width x Length (inches)	1.28 x 2.09 x 5.5	1.28 x 2.09 x 5.5	1.28 x 2.09 x 5.5
Height x Width x Length (mm)	32.5 x 53 x 140	32.5 x 53 x 140	32.5 x 53 x 140
Weight	0.44 lbs (200 g)	0.44 lbs (200 g)	0.73 lbs (330g)
<b>Compliance</b>			
Regulatory Compliance	IEEE 802.3af (PoE), RoHS Compliant, WEEE Compliant, CE	IEEE 802.3at (PoE), RoHS Compliant, WEEE Compliant, CE	IEEE 802.3bt (PoE), RoHS Compliant, WEEE Compliant, CE
Electromagnetic Emission and Immunity	FCC Part 15, Class B, EN 55022 Class B, EN 55024, VCCI	FCC Part 15, Class B, EN 55022 Class B, EN 55024, VCCI	FCC Part 15, Class B EN 55032 Class B EN 55024 VCCI
Safety	UL/cUL per IEC 60950-1, GS Mark per IEC 60950-1	UL/cUL per IEC 60950-1, GS Mark per IEC 60950-1	UL/IEC/EN 62368-1
<b>Warranty</b>			
Time Period	1 Year	1 Year	1 Year



GPI-115 and GPI-130

## DC Power Supplies

### SP-FAP200-PA-XX / SP-FAP250-PA-10 / SP-FAP400-PA-XX/ SP-FAP43F-PA-XX-5/ SP-FAP23J-PA-10/ SP-FAPU24-PA

Fortinet's DC Power Supplies provide constant and regulated power with standard regional plugs and plug adapters for 110-240V input sources. Output power ranges range from 30W to 65W, specifically designed to optimize FortiAP power requirements..

## Specifications

	SP-FAP200-PA-XX*	SP-FAP250-PA-10	SP-FAP400-PA-XX	SP-FAP43F-PA-XX-5	SP-FAP23J-PA-10*	SP-FAPU24-PA**
<b>Power Specifications</b>						
<b>Input Power</b>	100-240V AC	100-240V AC	100-240V AC	100-240V AC	100-240V AC	100-240V AC
<b>Output Power</b>	30W (12V DC @ 2.5A)	48W (12V DC @ 4A)	36W (12V @ 3A)	30W (12V @ 2.5A)	50W (48V @ 1.04A)	65W (54V @ 1.2A)
<b>Operating Temperature</b>	0°C to 40°C (32°F to 104°F)	0°C to 50°C (32°F to 122°F)	0°C to 40°C (32°F to 104°F)	0°C to 40°C (32°F to 104°F)	0°C to 40°C (32°F to 104°F)	0°C to 40°C (32°F to 104°F)
<b>Supported Models</b>						
FAP-221E	☑	—	—	—	—	—
FAP-223E	☑	—	—	—	—	—
FAP-U221EV	☑	—	—	—	—	—
FAP-U223EV	☑	—	—	—	—	—
FAP-U321EV	☑	—	—	—	—	—
FAP-U323EV	☑	—	—	—	—	—
FAP-231E	☑	—	—	—	—	—
FAP-231F	☑	☑	—	—	—	—
FAP-U231F	☑	☑	—	—	—	—
FAP-231G	☑	—	—	—	—	—
FAP-233G	☑	—	—	—	—	—
FAP-431F	—	—	☑	—	—	—
FAP-433F	—	—	☑	—	—	—
FAP-431G	—	☑	☑	—	—	—
FAP-433G	—	☑	☑	—	—	—
FAP-831F	—	—	☑	—	—	—
FAP-U421EV	—	—	☑	—	—	—
FAP-U423EV	—	—	☑	—	—	—
FAP-U431F	—	—	—	☑	—	—
FAP-U433F	—	—	—	☑	—	—
FAP-23JF	—	—	—	—	☑	—
FAP-U24JEV	—	—	—	—	—	☑

\*Requires an AC power cord (not supplied)



SP-FAP400 Series



SP-FAP200/250 Series



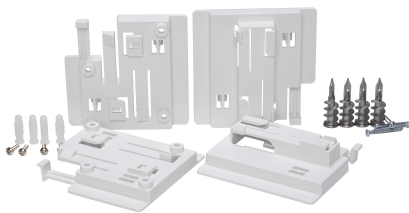
SP-FAPU24/23J Series

## Mounting Hardware

FAP-400-MNT-10 / FAP-400-SMNT-20 / FAP-SMNT-MTL-20 / FAP-400-RMNT-20 /  
FAP-ENC-43X / FAP-BRKT-MNT-5 / FAP-221E-MNT-50 / FAP-MNT-WJ-20

Fortinet offers complete kits for wall, ceiling T-Rail, recessed T-Rail, under-seat wedge enclosure, articulated wall or pole, desktop and wall jack conversion mounting solutions.

	FAP-400-MNT-10	FAP-400-SMNT-20	FAP-400-RMNT-20
<b>HARDWARE</b>			
Mounting Type	Wall Mount	Wall Mount	
	T-Rail Mount 9/16 in and 15/16 in Standard 9/16 in and 15/16 in Recessed	T-Rail Mount 9/16 in and 15/16 in Standard	T-Rail Mount 9/16 in and 15/16 in Recessed
Number of Kits	10	20	20
<b>Supported Models</b>			
FAP-U221EV/UV223EV	☑	☑	☑
FAP-U321EV/U323EV	☑	☑	☑
FAP-U421EV/U423EV	☑	☑	☑
FAP-U431F/U433F	☑	☑	☑
FAP-231F	☑	☑	☑
FAP-431F/433F	☑	☑	☑
FAP-831F	☑	☑	☑
FAP-231G	☑	☑	☑
FAP-233G	☑	☑	☑
FAP-431G	☑	☑	☑
FAP-433G	☑	☑	☑



FAP Ceiling/Wall Mount Bracket



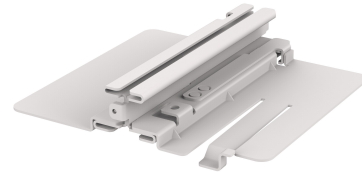
FAP-400 Wall/Ceiling Mount



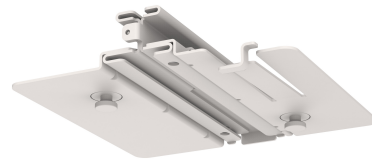
FAP-400 Recessed T-Rail Mount

## Mounting Hardware

FAP-ALL-MTL-5	
Hardware	
Mounting Type	Standard T-Rail, Wall, or Ceiling
Number of Kits	5
Supported Models	
FAP-231G	✓
FAP-233G	✓
FAP-431G	✓
FAP-433G	✓
FAP-231F	✓
FAP-431F	✓
FAP-433F	✓
FAP-831F	✓
FAP-U431F	✓
FAP-U433F	✓
FAP-U421EV	✓
FAP-U423EV	✓
FAP-U221EV	✓
FAP-U223EV	✓
FAP-U321EV	✓
FAP-U323EV	✓

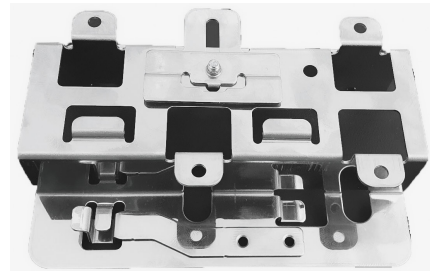


FAP-ALL-MTL-5 Top (Top view)



FAP-ALL-MTL-5 Bottom (Bottom view)

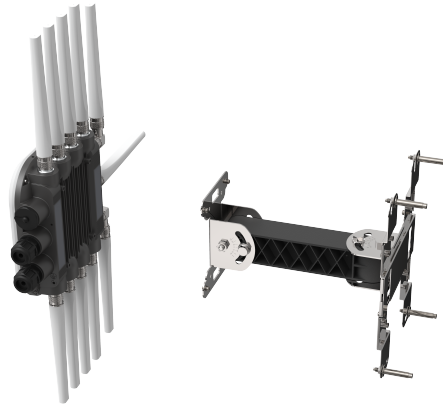
FAP-SMNT-MTL-20	
Hardware	
Mounting Type	Adjustable Metallic Wall or Ceiling Mount
Number of Kits	20
Supported Models	
FAP-U221EV/U223EV	✓
FAP-U321EV/U323EV	✓
FAP-U421EV/U423EV	✓
FAP-U431F/U433F	✓
FAP-231E	✓
FAP-421E/423E	✓
FAP-231F	✓
FAP-431F/433F	✓
FAP-831F	✓
FAP-231G	✓
FAP-233G	✓
FAP-431G	✓
FAP-433G	✓



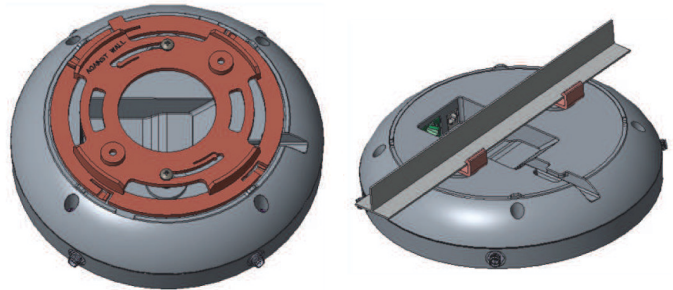
FAP-SMNT-MTL-20

## Mounting Hardware

FAP-BRKT-MNT-5	
Hardware	
Mounting Type	Fully Articulated Wall Mount Pole/Mast Mount
Number of Kits	5
Supported Models	
FAP-234G	<input checked="" type="checkbox"/>
FAP-234F	<input checked="" type="checkbox"/>
FAP-432F	<input checked="" type="checkbox"/>
FAP-U234F	<input checked="" type="checkbox"/>
FAP-U432F	<input checked="" type="checkbox"/>



FAP-221E-MNT-50	
Hardware	
Mounting Type	Wall Mount T-Rail
Number of Kits	50
Supported Models	
FAP-221E/223E	<input checked="" type="checkbox"/>

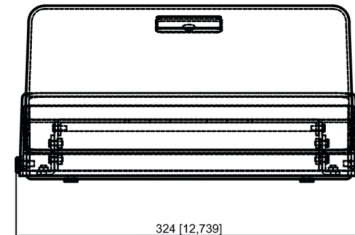
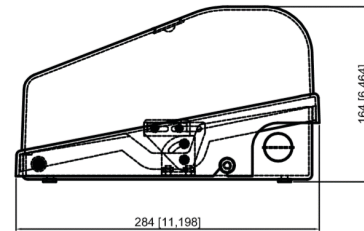
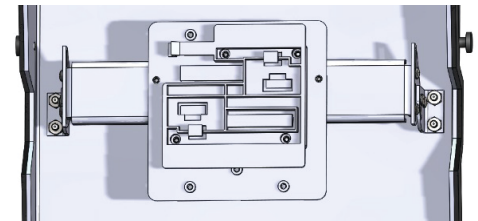


FAP-MNT-WJ-20	
Hardware	
Mounting Type	Desktop Stand
Number of Kits	20
Supported Models	
FAP-C24JE	<input checked="" type="checkbox"/>
FAP-U24JEV	<input checked="" type="checkbox"/>
FAP-23JF	<input checked="" type="checkbox"/>



# Mounting Hardware

FAP-ENC-43X	
Hardware	
Mounting Type	Under-Seat Wedge Wall Mount (Any Flat Surface)
<b>Application</b>	
Indoor/Outdoor	✓
Inconspicuous	✓
Harsh Environments	✓
Stadiums and Arenas	✓
<b>Mechanical</b>	
Polycarbonate Cover	✓
Power Coated, Heavy-Gauge 5052 Aluminum, Mounting Plate	✓
Gore Membrane Vent	✓
Adapted Plate Included	✓
<b>Supported Models</b>	
FAP-U221EV	✓
FAP-U321EV/U323EV	✓
FAP-221E/231E	✓
FAP-231F/U231F	✓
FAP-431F/U431F	✓
FAP-231G	✓
FAP-233G	✓



FAP-ENC-43X

# Mounting Hardware

FAP-ENC-12X10	
Hardware	
Mounting Type	Pole or Mast Wall Mount (Any Flat Surface)
Application	
Indoor/Outdoor	✓
Inconspicuous	✓
Harsh Environments	✓
Stadiums and Arenas	✓
Mechanical	
Polycarbonate Cover	✓
Power Coated, Heavy-Gauge 5052 Aluminum, Mounting Plate	✓
Gore Membrane Vent	✓
Adapted Plate Included	✓
Supported Models	
FAP-233G/231G	✓
FAP-433G/431G	✓
FAP-433F/431F	✓
FAP-423E/421E	✓
FAP-U433F/U431F	✓
FAP-U323EV/U321EV	✓
FAP-U223E/U221E	✓
FAP-S423E/S421E	✓
FAP-U423EV/U421EV	✓



## Polycarbonate Enclosures

12 x 10 x 6 in. and 14 x 12 x 6 in.



### 12 x 10 x 6 Basic Enclosures

Door Type - Opaque; Lock Type - Latch

Hole Configuration	SKU	MFG Part #
8 - 1/2 in. Holes and Cord Grip	217166	V12106LO-8.5-T



### Specifications

Size	12 x 10 x 6 in. 14 x 12 x 6 in.
Environment	Indoor/Outdoor
Locks	Latch
Weight	5.89 lbs.
NEMA Rating	4X
Material	Polycarbonate
Mounting	Wall or Pole
Operating Temperature Range	-40° to 265° F

### Configuration Options

Opaque Door
Latch Locks
8 Bulkhead Holes (1/2 in.)

### Optional Accessories

590596	*RPSMA Male to RPSMA Bulkhead Female Cable Assembly - 1/2 in. Bulkhead
291487	RPTNC Lightning Arrestor
289319	RPSMA Lightning Arrestor
303580	Pole Mount Kit
282607	Right Angle Bracket

### Included Accessories (Pictured Above)

15/16 in. T-Bar Mounting Plate
IP67 Rated NEMA Plugs - Qty. 8
Cord Grip
Self-Tapping Screws (10 pk.)

\*Custom assembly required to accommodate 1/2 in. holes in 8-hole base.

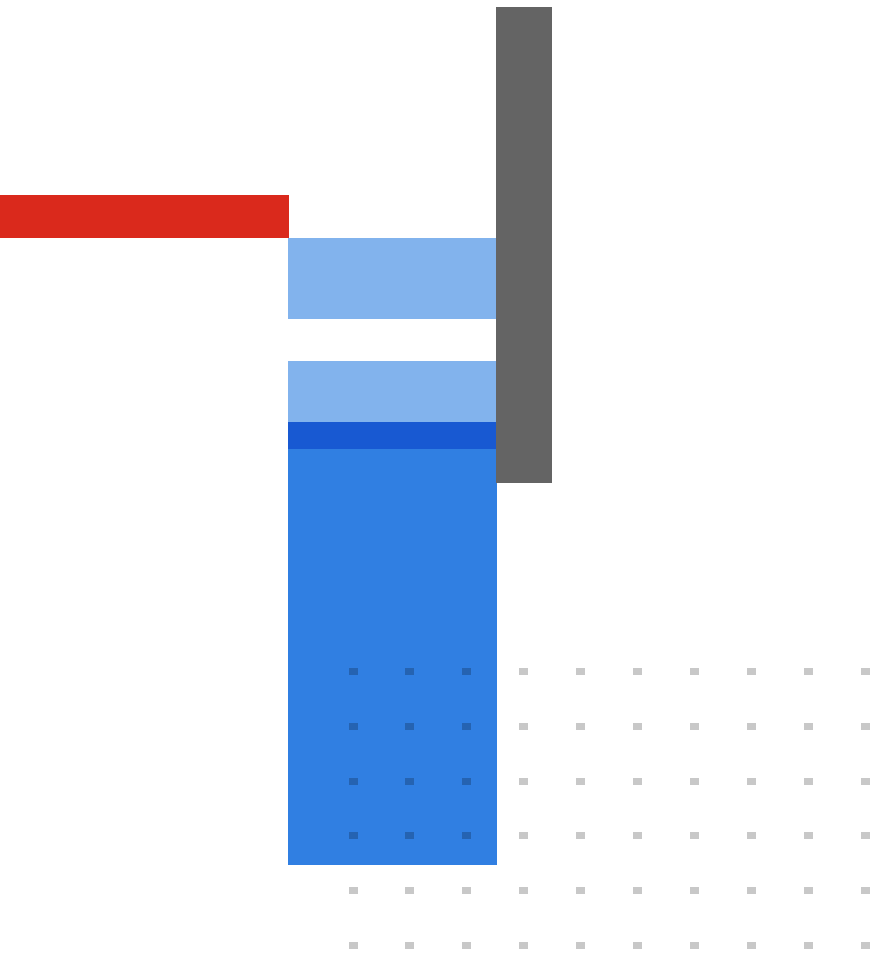




## Ordering Information

Product	SKU	Description
POE Injectors	GPI-115	IEEE 802.3af-compliant single-port, mid-span, with 15.4 Watt Gigabit Ethernet (GE) PoE.
	GPI-130	IEEE 802.3at-compliant single-port, mid-span, with 30 Watt Gigabit Ethernet (GE) PoE.
	GPI-145	IEEE 802.3bt-compliant single-port, mid-span, with 60 Watt 10/100/1000 Mbps, 2.5/5/10 Gbps PoE.
DC Power Supplies	SP-FAP200-PA-XX	12V, 2.5A, 30 Watt DC power supply.
	SP-FAP250-PA-10	12V, 4A, 48 Watt DC power supply (extended temperature range); Pack of 10.
	SP-FAP400-PA-XX	12V, 3A, 36 Watt DC power supply.
	SP-FAP43F-PA-XX-5	12V, 2.5A, 30 Watt DC power supply (Pack of 5).
	SP-FAP23J-PA-10	48V, 1.04A, 50 Watt DC power supply (Pack of 10).
	SP-FAPU24-PA	54V, 1.2A, 65 Watt DC power supply.
Mounting Hardware	FAP-400-MNT-10	Complete wall and T-rail Mount Kit (Pack of 10).
	FAP-400-SMNT-20	Mounting brackets for standard/ wall or ceiling mount (Pack of 20).
	FAP-SMNT-MTL-20	Metal mounting brackets for standard T-rail wall or ceiling mount (Pack of 20).
	FAP-400-RMNT-20	Mounting brackets for recessed T-rail (Pack of 20).
	FAP-ALL-MTL-5	Metal mounting brackets for standard T-rail, wall, or ceiling mount (Pack of 5).
	FAP-BRKT-MNT-5	Wall or Mast mounting solution for outdoor Access Points (Pack of 5).
	FAP-221E-MNT-50	Complete wall and T-rail Mount Kit (Pack of 50).
Enclosures	FAP-MNT-WJ-20	Desktop stand for Wall Jack style APs. Converts wall mounting hardware included with unit to desktop mounting (Pack of 20).
	FAP-ENC-43X	Under-seat enclosure for stadiums and arenas.
	FAP-ENC-12X10	12 × 10 × 6 inch NEMA 4X Polycarbonate Enclosure is intended for indoor or outdoor use.





**FORTINET**

[www.fortinet.com](http://www.fortinet.com)

Copyright © 2024 Fortinet, Inc. All rights reserved. Fortinet®, FortiGate®, FortiCare® and FortiGuard®, and certain other marks are registered trademarks of Fortinet, Inc., and other Fortinet names herein may also be registered and/or common law trademarks of Fortinet. All other product or company names may be trademarks of their respective owners. Performance and other metrics contained herein were attained in internal lab tests under ideal conditions, and actual performance and other results may vary. Network variables, different network environments and other conditions may affect performance results. Nothing herein represents any binding commitment by Fortinet, and Fortinet disclaims all warranties, whether express or implied, except to the extent Fortinet enters a binding written contract, signed by Fortinet's Chief Legal Officer, with a purchaser that expressly warrants that the identified product will perform according to certain expressly-identified performance metrics and, in such event, only the specific performance metrics expressly identified in such binding written contract shall be binding on Fortinet. For absolute clarity, any such warranty will be limited to performance in the same ideal conditions as in Fortinet's internal lab tests. Fortinet disclaims in full any covenants, representations, and guarantees pursuant hereto, whether express or implied. Fortinet reserves the right to change, modify, transfer, or otherwise revise this publication without notice, and the most current version of the publication shall be applicable.

March 11, 2024

FACC-DAT-R08-20240311